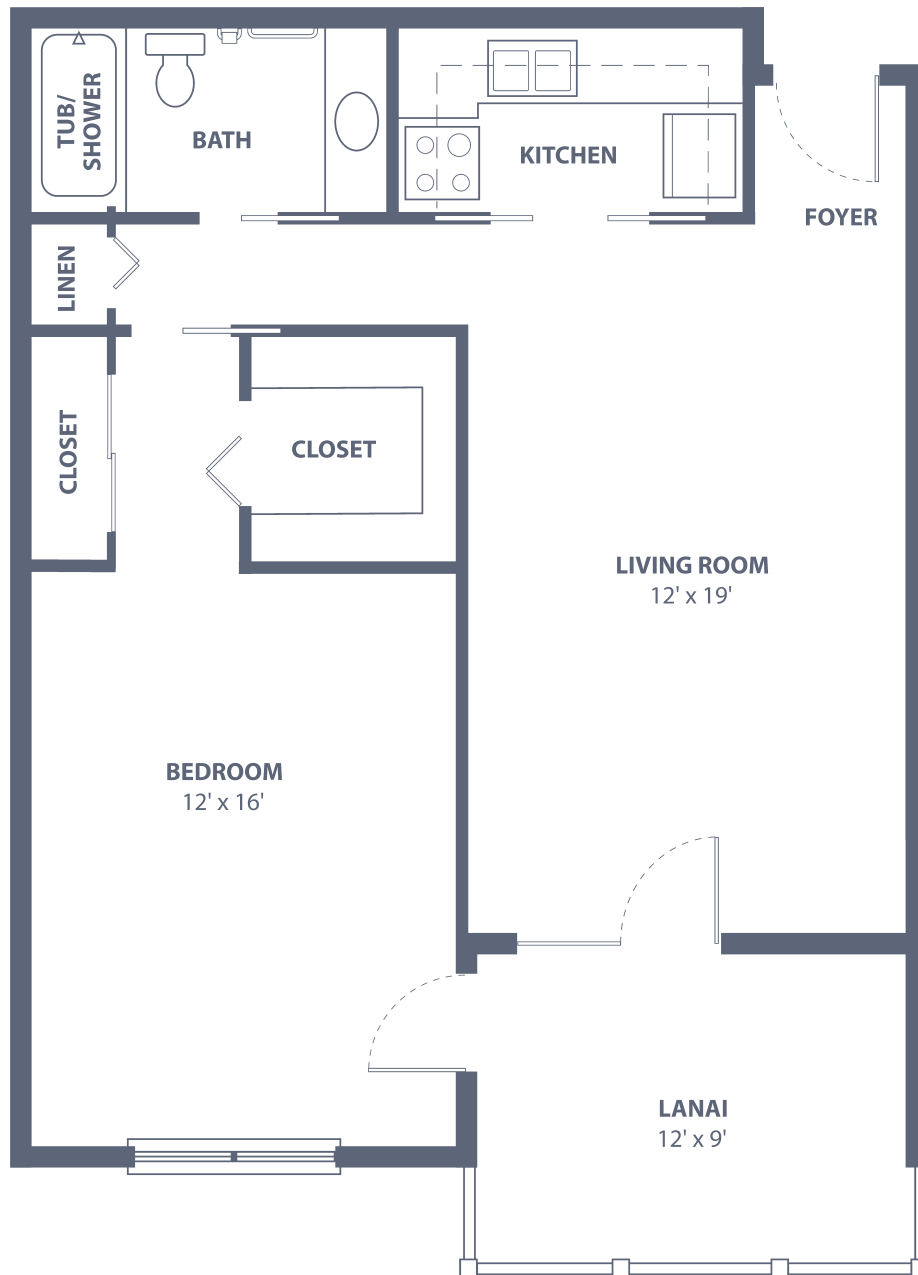


Captiva Gables West

One Bedroom • One Bath • 835 sq. ft.



Dimensions are approximate.
Floor plans may vary.

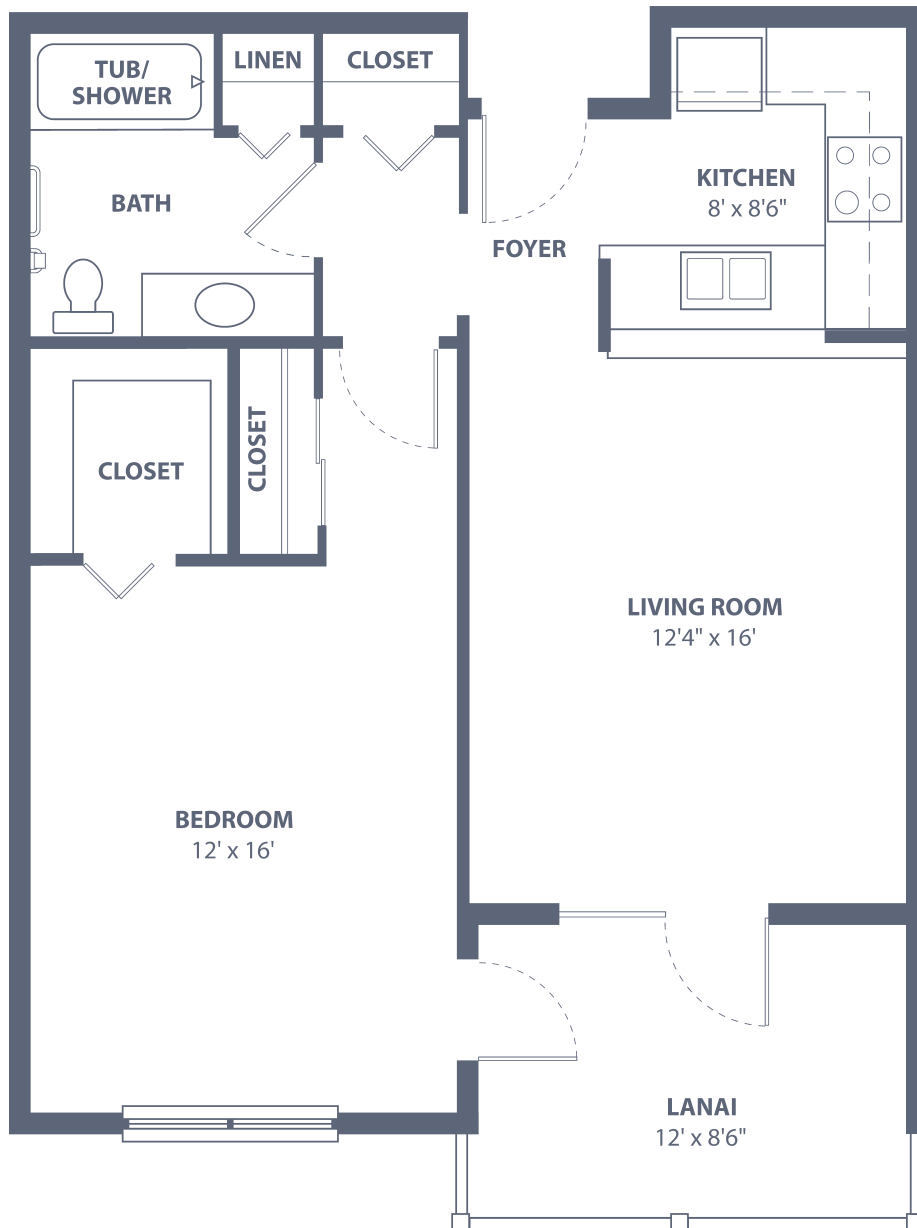


South Port Square

23023 Westchester Blvd. • Port Charlotte, FL 33980
941-625-1100 • SouthPortSeniorLiving.com

Captiva Gables East

One Bedroom • One Bath • 850 sq. ft.



Dimensions are approximate.
Floor plans may vary.



South Port Square

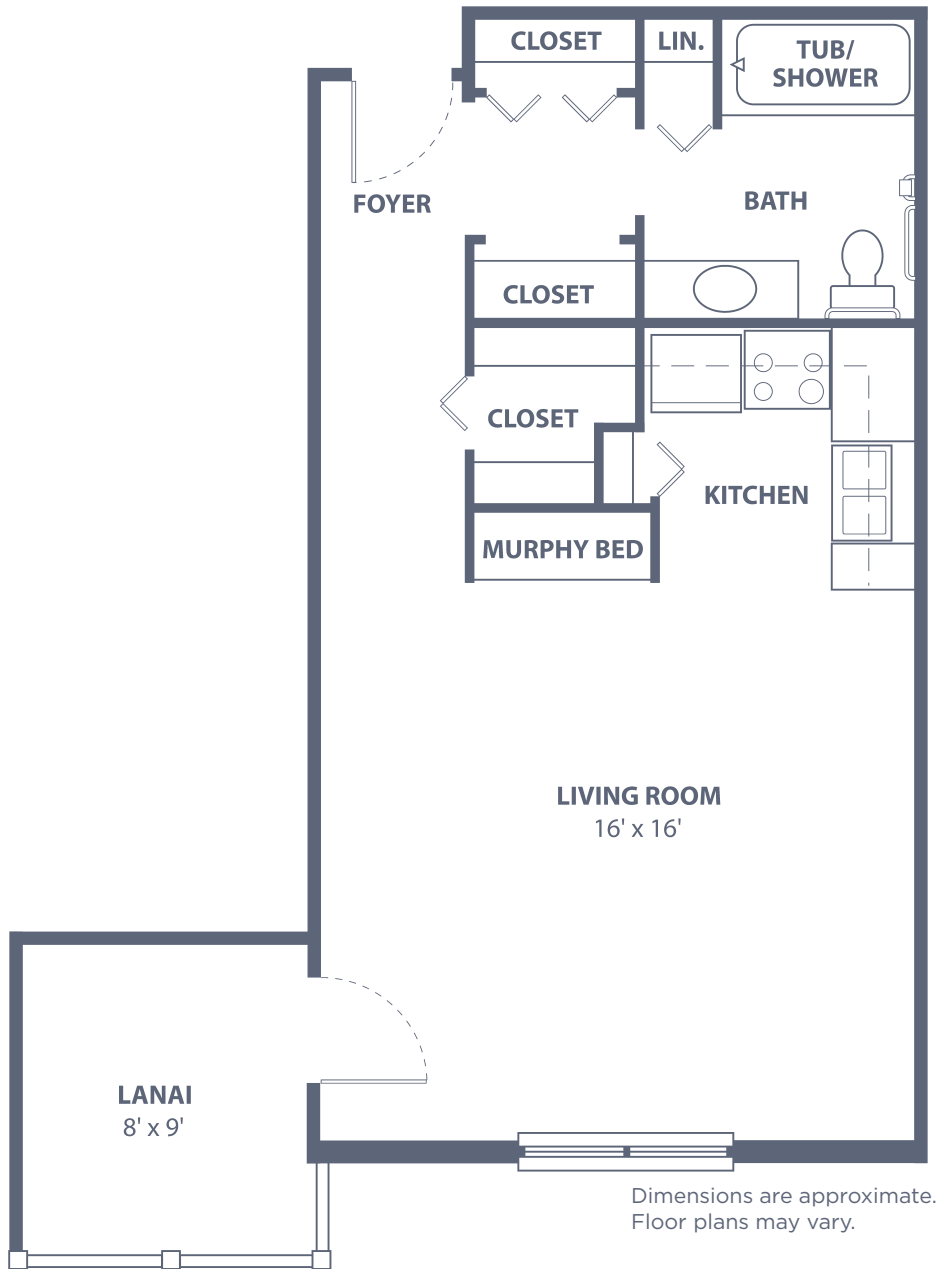
23023 Westchester Blvd. • Port Charlotte, FL 33980
941-625-1100 • SouthPortSeniorLiving.com

Managed by  Life Care Services®

 EQUAL HOUSING OPPORTUNITY

Sanibel

Studio • One Bath • 600 sq. ft.



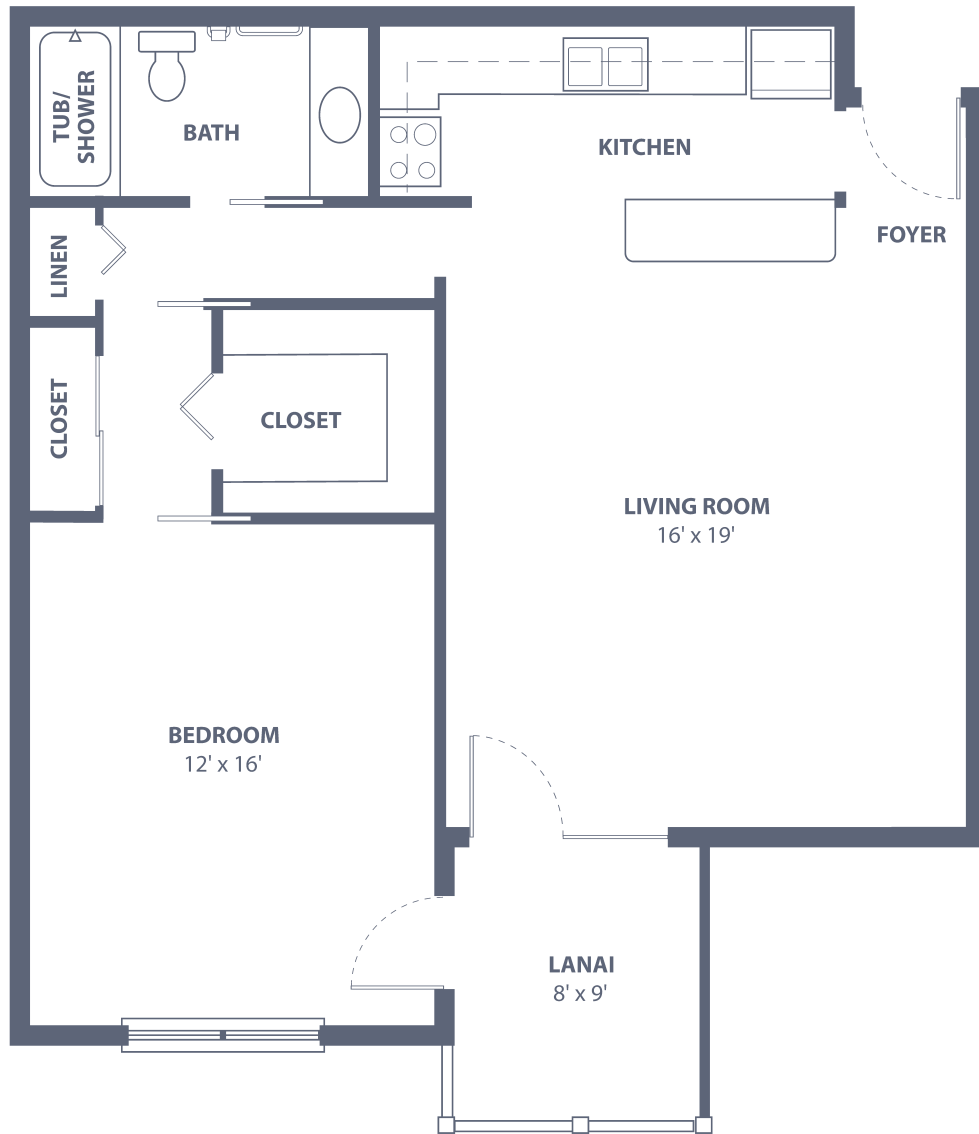
South Port Square

23023 Westchester Blvd. • Port Charlotte, FL 33980
941-625-1100 • SouthPortSeniorLiving.com

Managed by  Life Care Services® 

Key West Gables West

One Bedroom • One Bath • 925 sq. ft.



Dimensions are approximate.
Floor plans may vary.



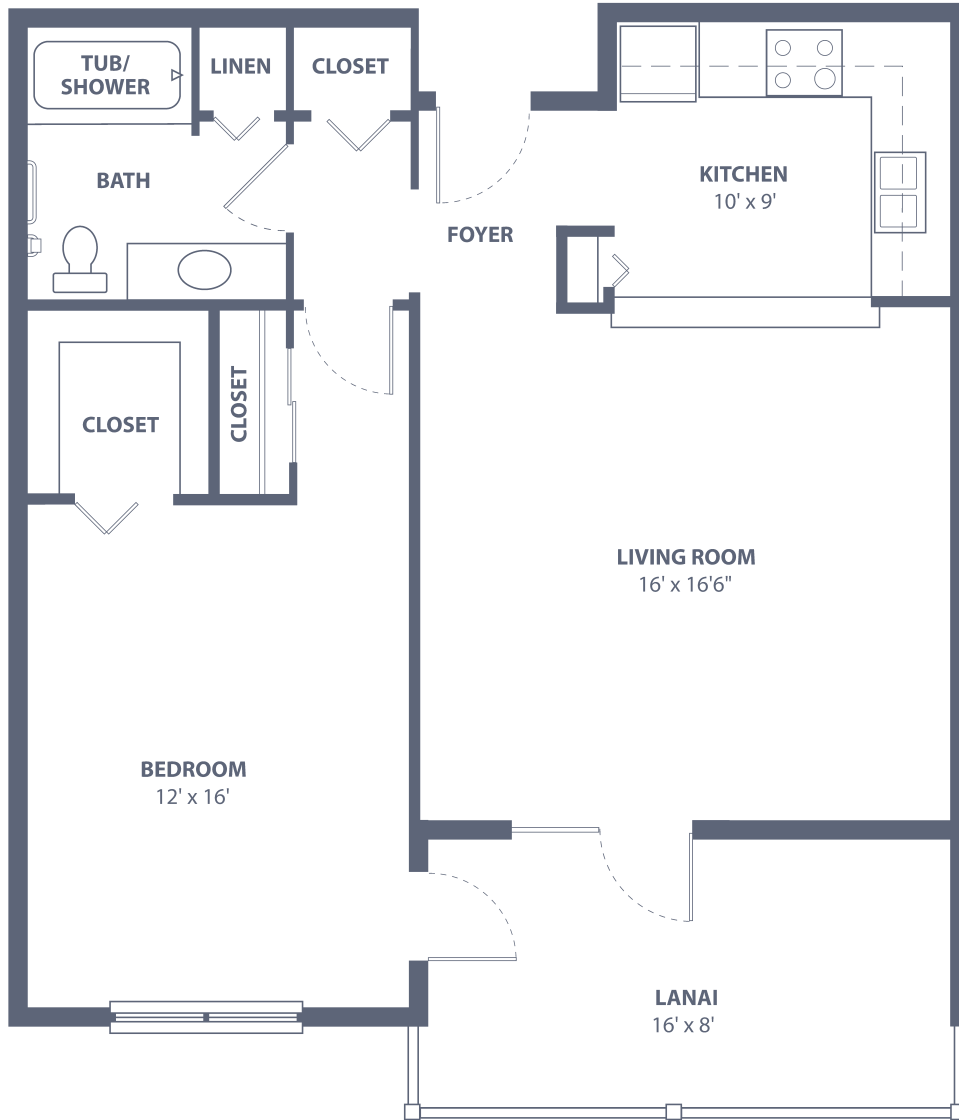
South Port Square

23023 Westchester Blvd. • Port Charlotte, FL 33980
941-625-1100 • SouthPortSeniorLiving.com

Managed by  Life Care Services®


Key West Gables East

One Bedroom • One Bath • 980 sq. ft.



Dimensions are approximate.
Floor plans may vary.



South Port Square

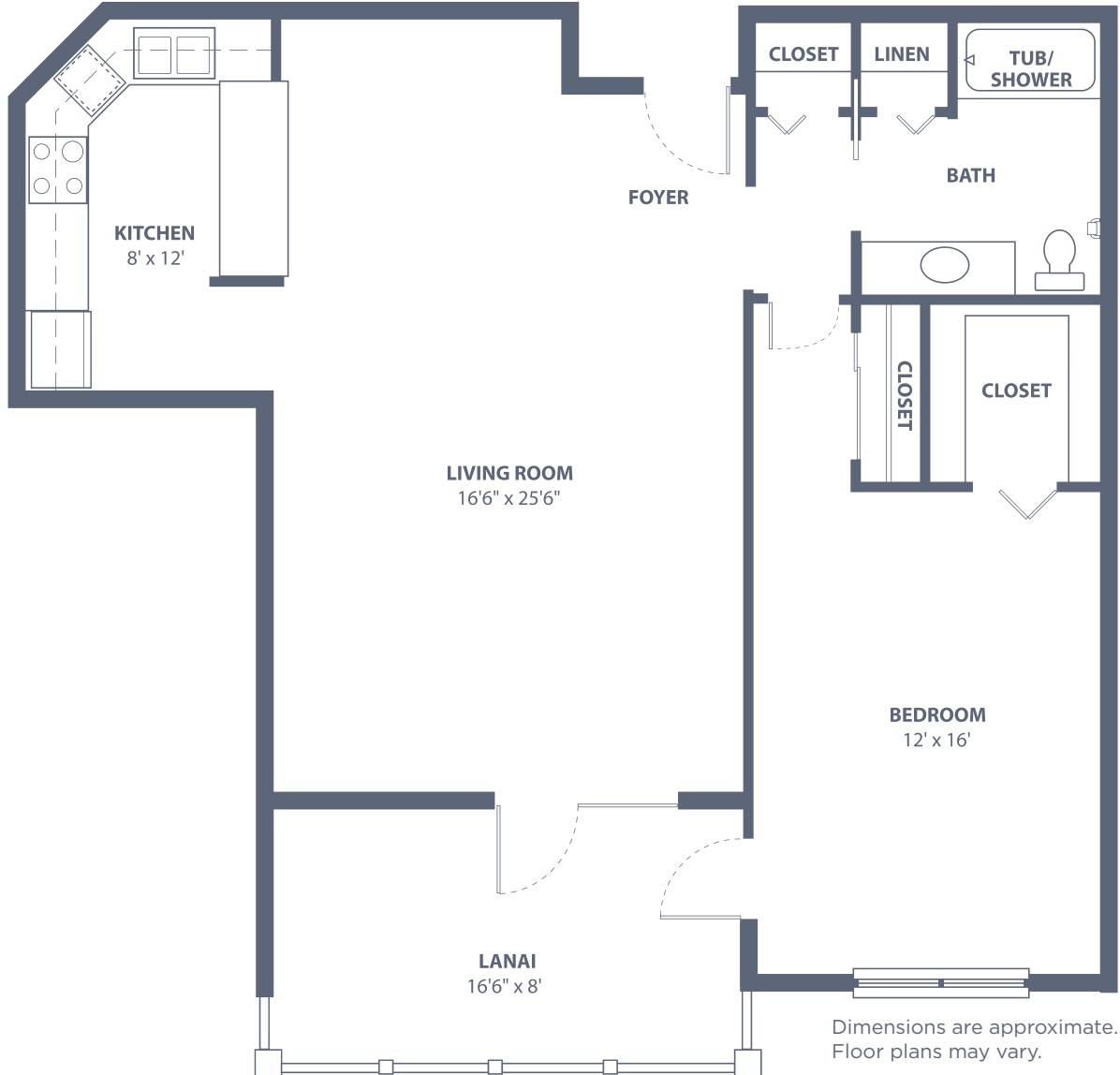
23023 Westchester Blvd. • Port Charlotte, FL 33980
941-625-1100 • SouthPortSeniorLiving.com

Managed by  Life Care Services®

 EQUAL HOUSING OPPORTUNITY

Key West II

One Bedroom • One Bath • 858 sq. ft.



South Port Square

23023 Westchester Blvd. • Port Charlotte, FL 33980
941-625-1100 • SouthPortSeniorLiving.com

Managed by  Life Care Services®

 EQUAL HOUSING OPPORTUNITY

Marco I

One Bedroom • Two Bath • 1,100 sq. ft.



Dimensions are approximate.
Floor plans may vary.

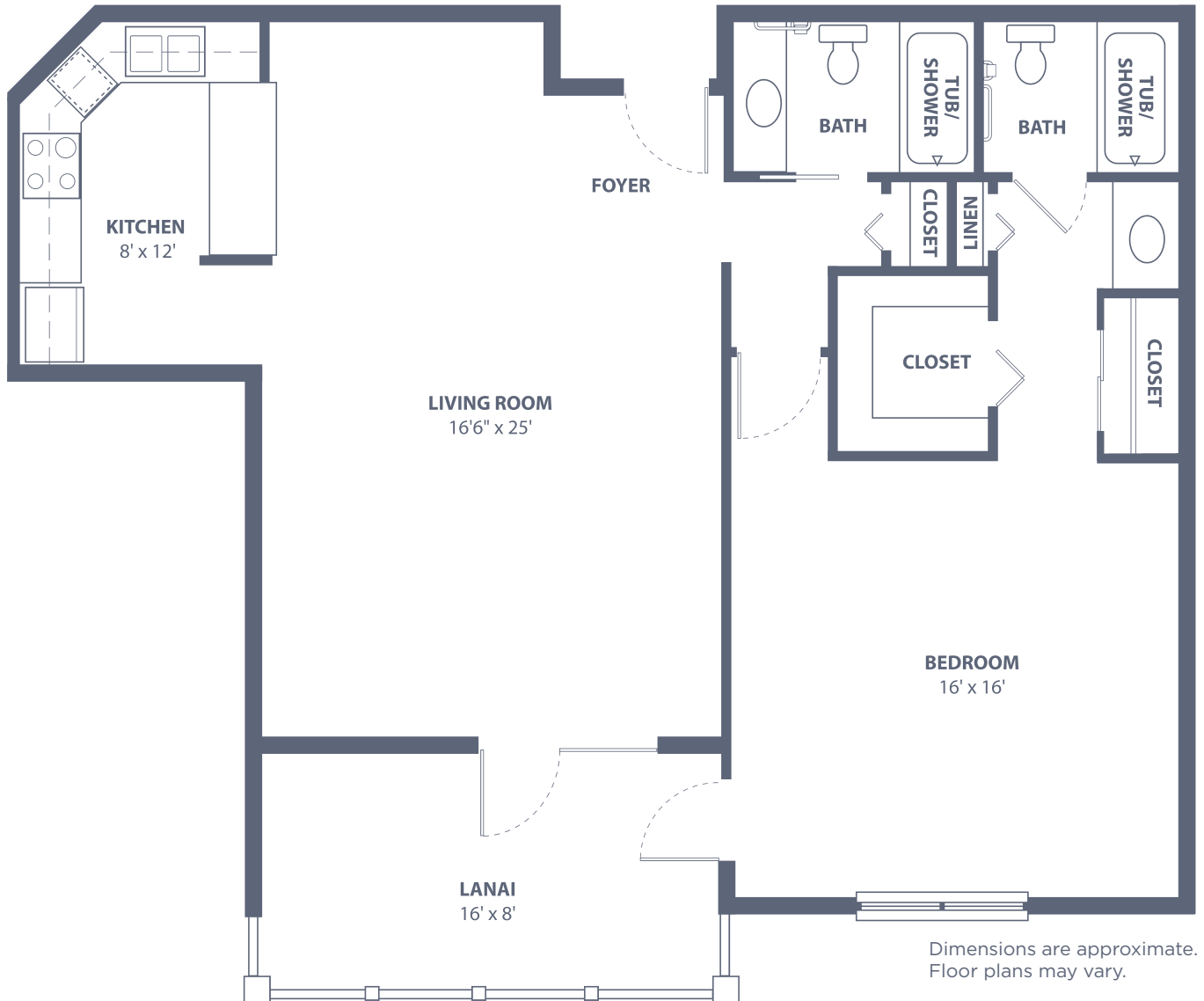


South Port Square

23023 Westchester Blvd. • Port Charlotte, FL 33980
941-625-1100 • SouthPortSeniorLiving.com

Marco II

One Bedroom • Two Bath • 1,215 sq. ft.



South Port Square

23023 Westchester Blvd. • Port Charlotte, FL 33980
941-625-1100 • SouthPortSeniorLiving.com

Managed by  Life Care Services® 