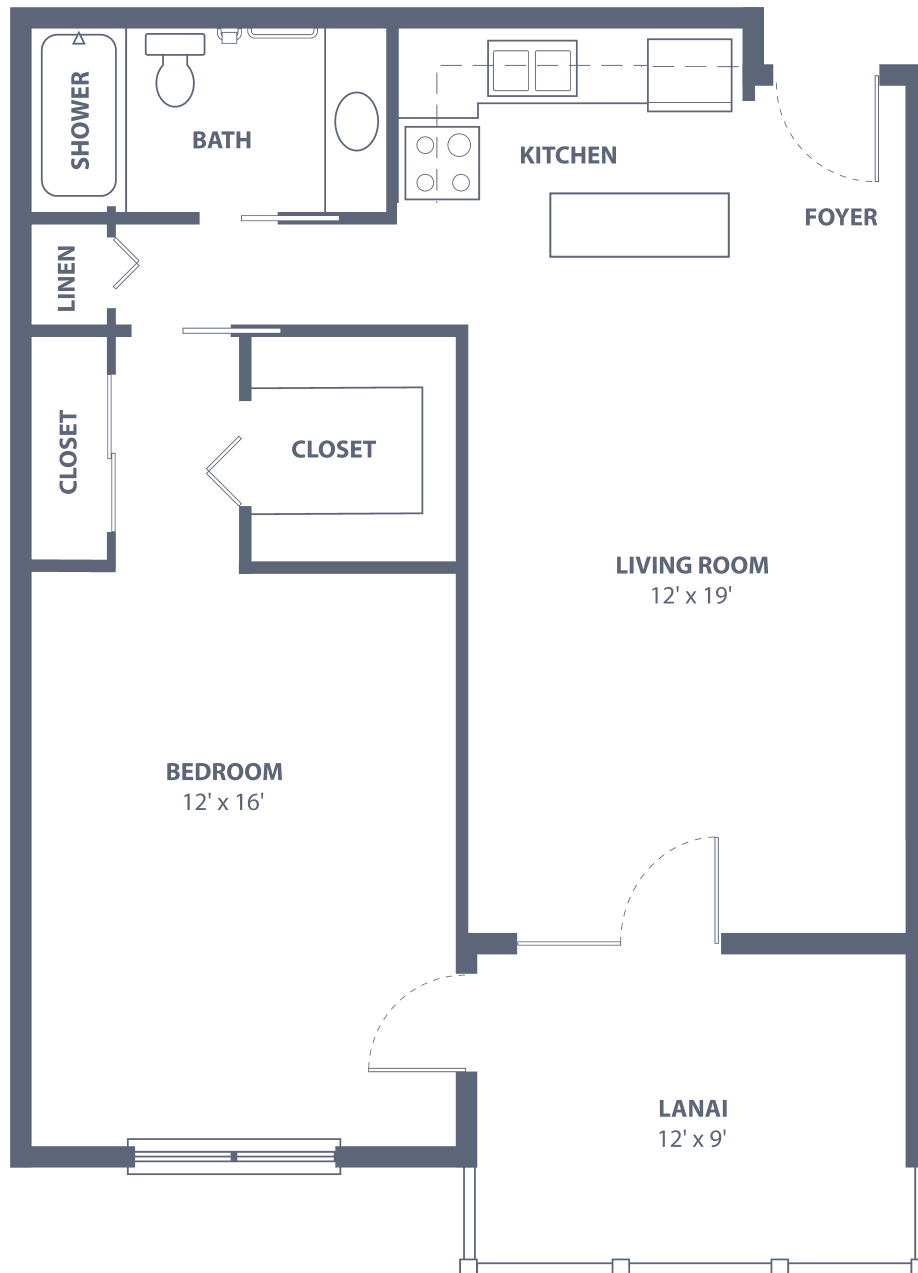


# Captiva Gables West

One Bedroom • One Bath • 835 sq. ft.



Dimensions are approximate.  
Floor plans may vary.

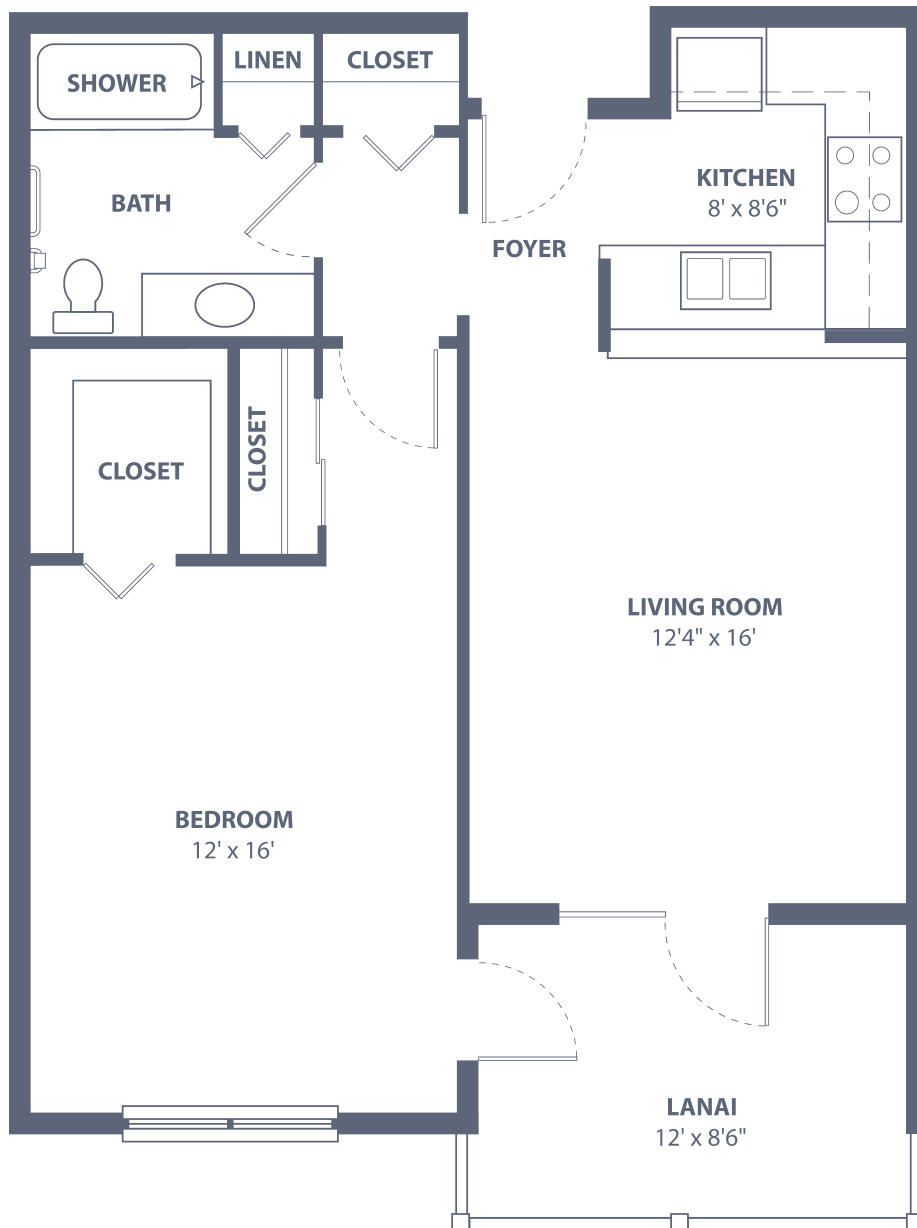


## South Port Square

23023 Westchester Blvd. • Port Charlotte, FL 33980  
941-625-1100 • [SouthPortSeniorLiving.com](http://SouthPortSeniorLiving.com)

# Captiva Gables East

One Bedroom • One Bath • 850 sq. ft.



Dimensions are approximate.  
Floor plans may vary.



## South Port Square

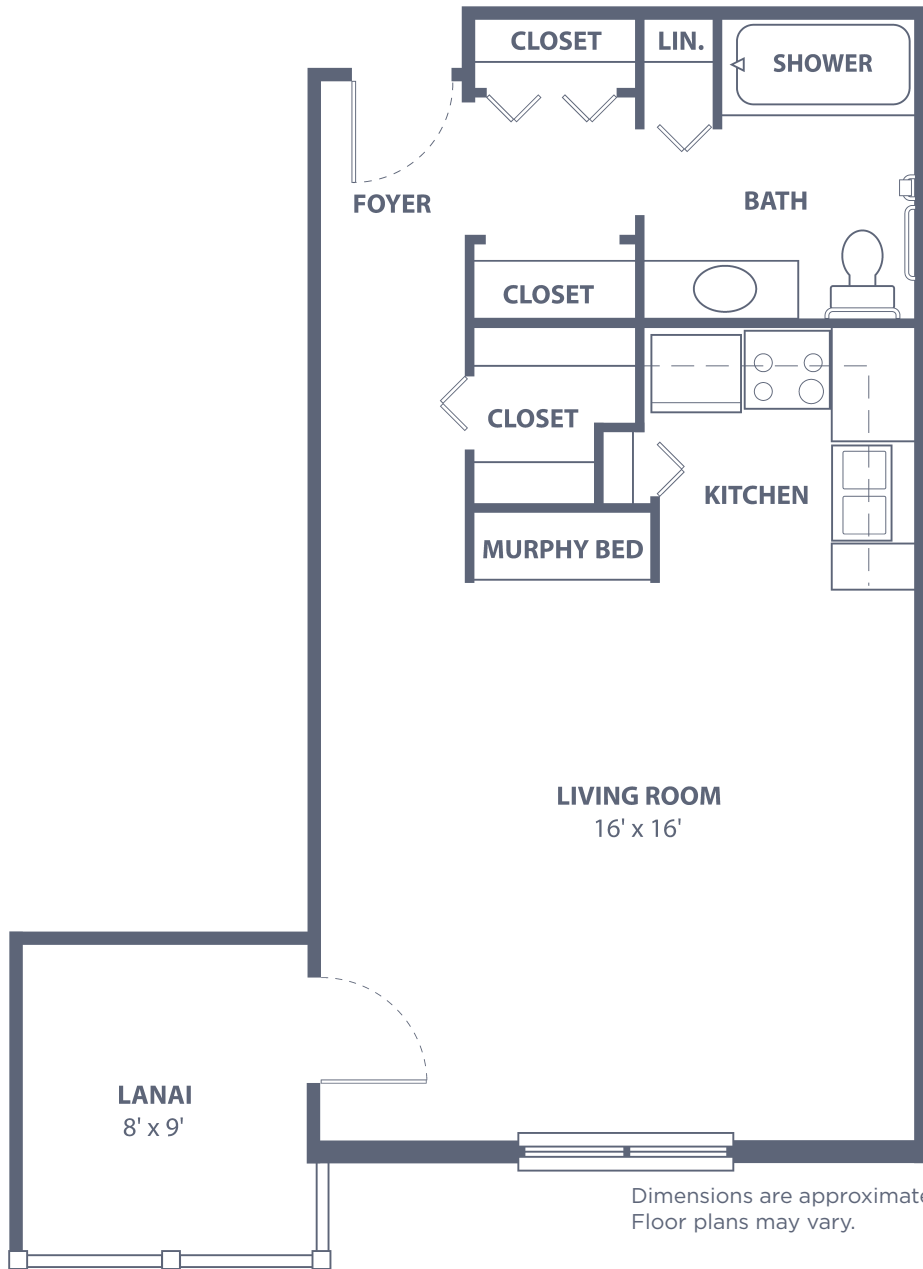
23023 Westchester Blvd. • Port Charlotte, FL 33980  
941-625-1100 • [SouthPortSeniorLiving.com](http://SouthPortSeniorLiving.com)

Managed by  Life Care Services®

 EQUAL HOUSING OPPORTUNITY

# Sanibel

Studio • One Bath • 600 sq. ft.



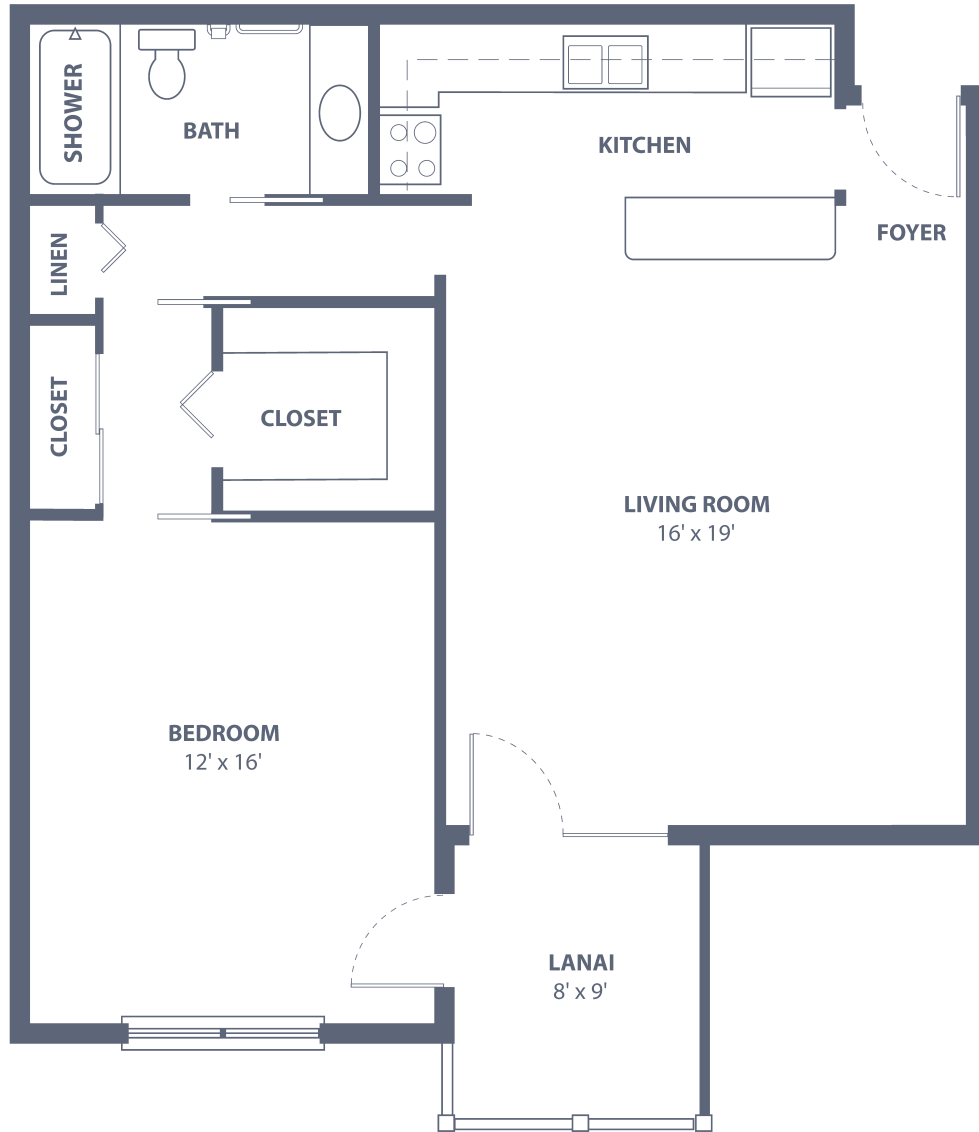
## South Port Square

23023 Westchester Blvd. • Port Charlotte, FL 33980  
941-625-1100 • SouthPortSeniorLiving.com

Managed by  Life Care Services® 

# Key West Gables West

One Bedroom • One Bath • 925 sq. ft.



Dimensions are approximate.  
Floor plans may vary.



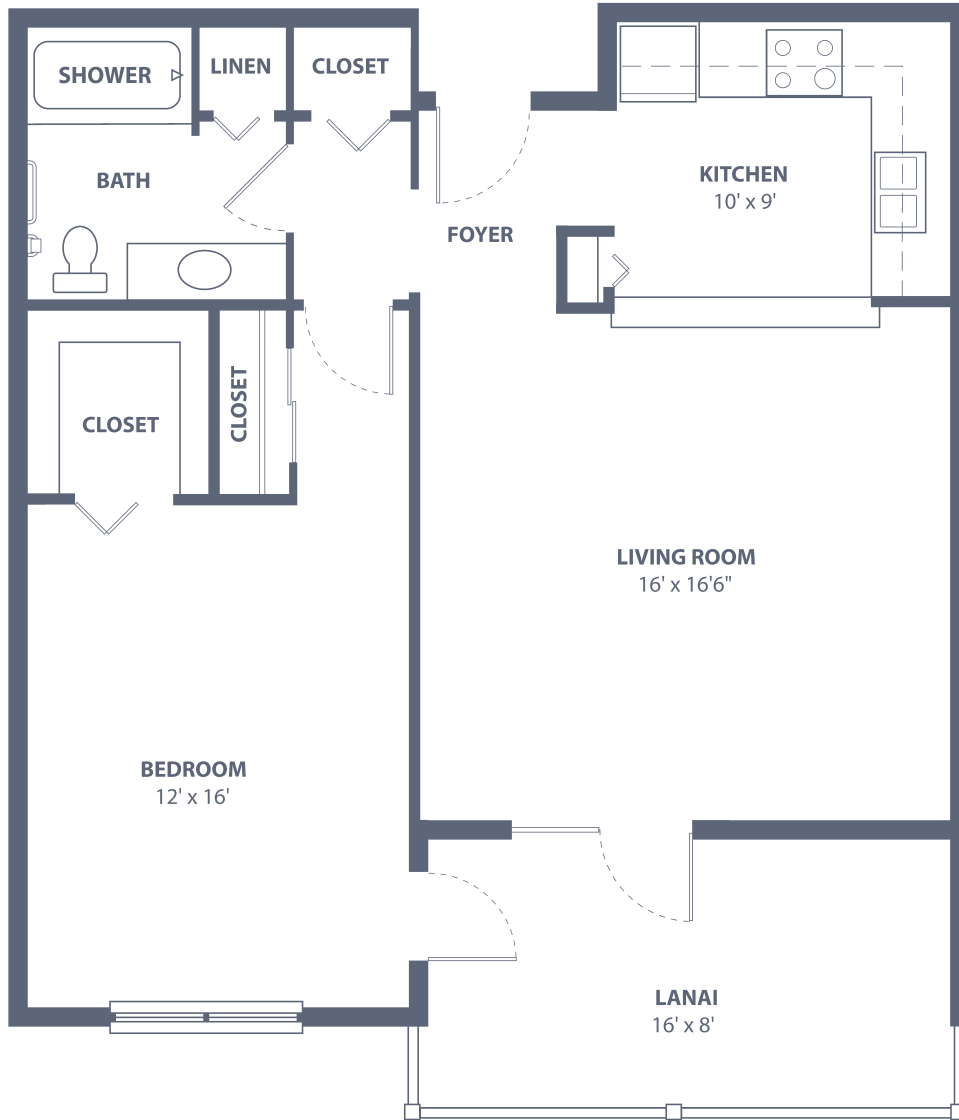
## South Port Square

23023 Westchester Blvd. • Port Charlotte, FL 33980  
941-625-1100 • [SouthPortSeniorLiving.com](http://SouthPortSeniorLiving.com)

Managed by  Life Care Services® 

# Key West Gables East

One Bedroom • One Bath • 980 sq. ft.



Dimensions are approximate.  
Floor plans may vary.

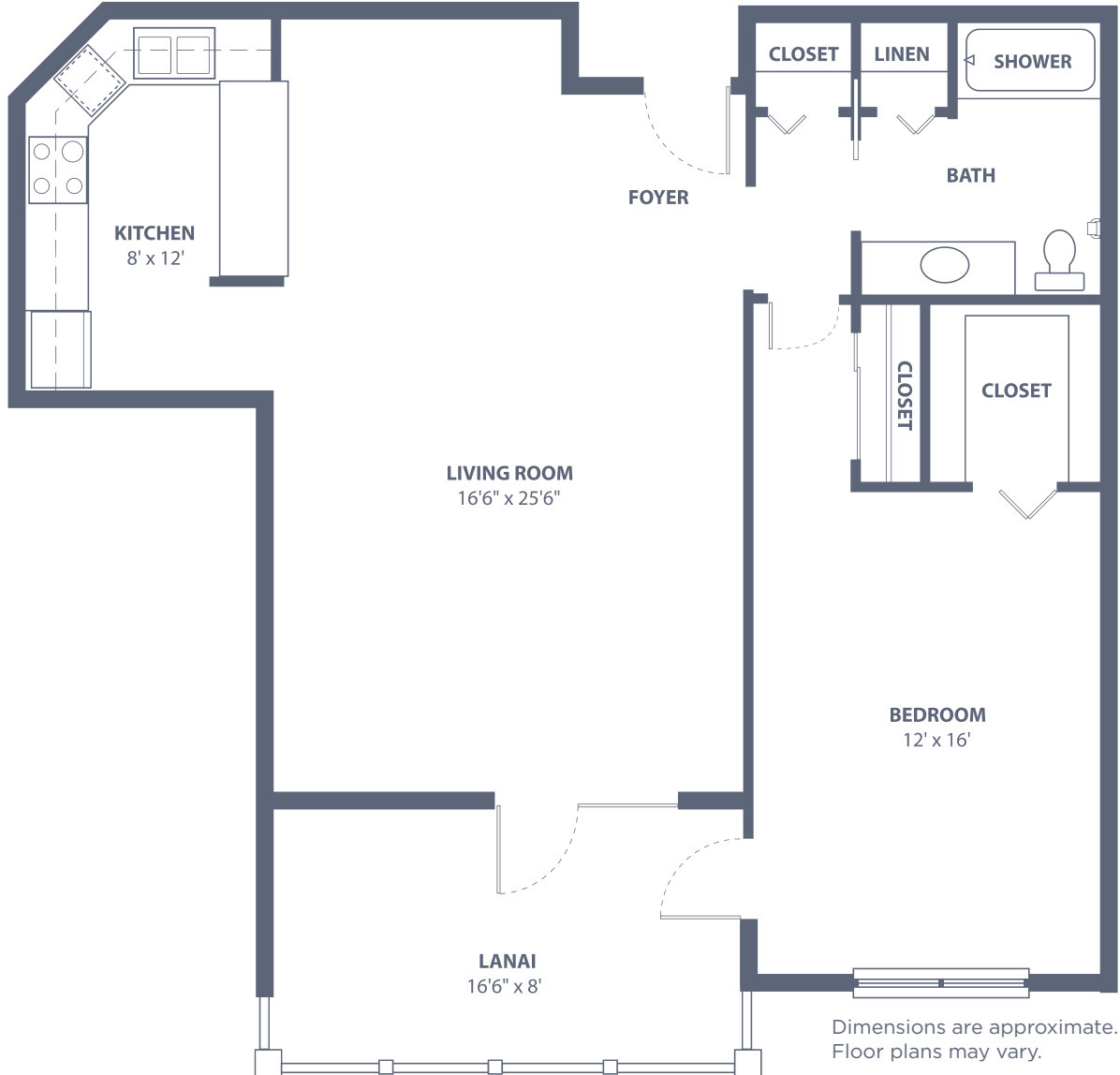


## South Port Square

23023 Westchester Blvd. • Port Charlotte, FL 33980  
941-625-1100 • [SouthPortSeniorLiving.com](http://SouthPortSeniorLiving.com)

# Key West II

One Bedroom • One Bath • 1,090 sq. ft.



## South Port Square

23023 Westchester Blvd. • Port Charlotte, FL 33980  
941-625-1100 • [SouthPortSeniorLiving.com](http://SouthPortSeniorLiving.com)

Managed by  Life Care Services®

 EQUAL HOUSING OPPORTUNITY

# Marco I

One Bedroom • Two Bath • 1,100 sq. ft.



Dimensions are approximate.  
Floor plans may vary.

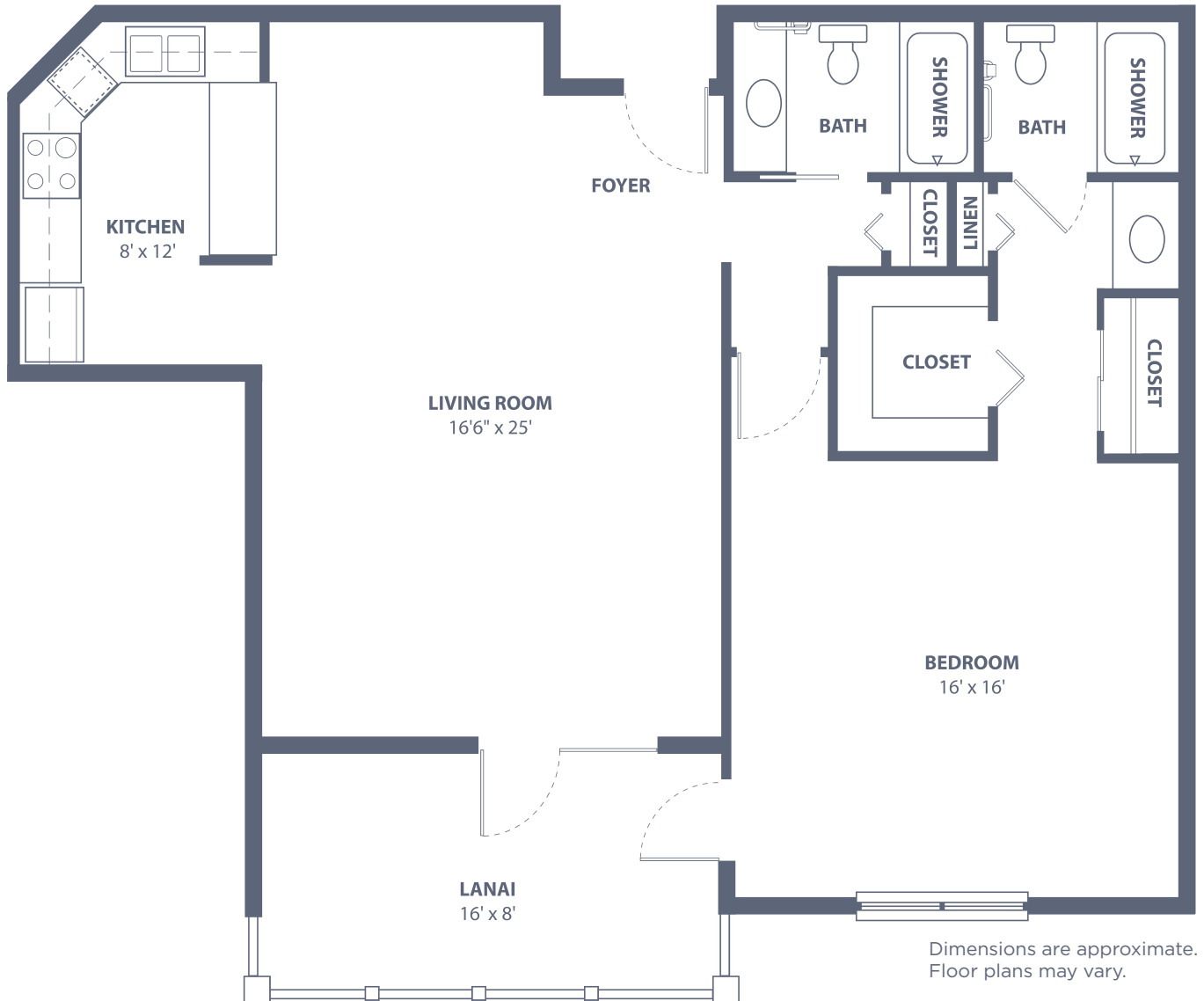


## South Port Square

23023 Westchester Blvd. • Port Charlotte, FL 33980  
941-625-1100 • [SouthPortSeniorLiving.com](http://SouthPortSeniorLiving.com)

# Marco II

One Bedroom • Two Bath • 1,215 sq. ft.



## South Port Square

23023 Westchester Blvd. • Port Charlotte, FL 33980  
941-625-1100 • [SouthPortSeniorLiving.com](http://SouthPortSeniorLiving.com)

Managed by  Life Care Services® 